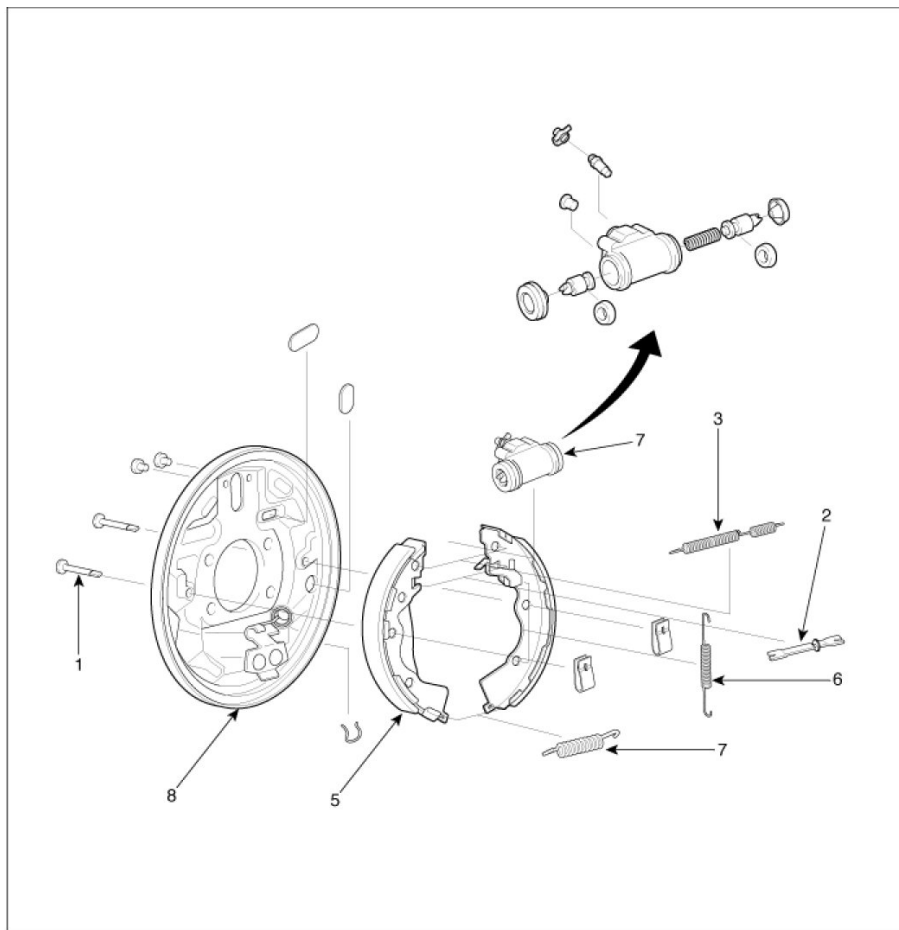


Brake Drum: Service and Repair

COMPONENTS



1. Shoe hold down pin
2. shoe adjuster
3. Upper return spring
4. Shoe

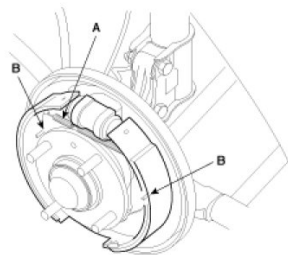
5. Adjusting spring
6. Lower return spring
7. Wheel cylinder
8. Backing plate

REMOVAL

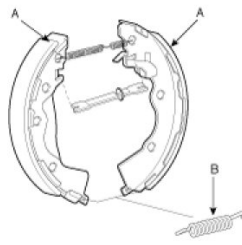
CAUTION:

- 1) Frequent inhalation of brake pad dust, regardless of material composition, could be hazardous to your health.
- 2) Avoid breathing dust particles.
- 3) Never use an air hose or brush to clean brake assemblies.

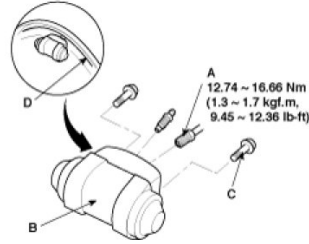
1. Remove the shoe hold spring and shoe hold pin (B).
2. Remove the upper return spring (A).



3. Lower the brake shoe assembly (A), and remove the lower return spring (B). Make sure not to damage the dust cover on the wheel cylinder.



4. Disconnect the parking brake cable from the parking brake lever.
5. Remove the brake shoe assembly.
6. Disconnect brake tubes(A) from the wheel cylinder(B).
7. Remove the bolt (C) and the wheel cylinder(B) from the backing plate(D).

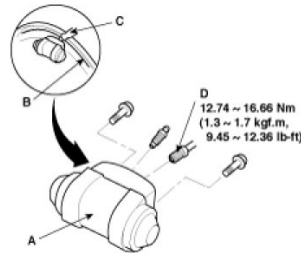


INSTALLATION

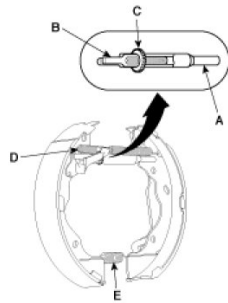
NOTE:

- 1) Do not spill brake fluid on the vehicle: it may damage the paint; if brake fluid does contact the paint. Wash it off immediately with water.
- 2) To prevent spills, cover the hose joints with rags or shop towels.
- 3) Use only a genuine wheel cylinder special bolt.

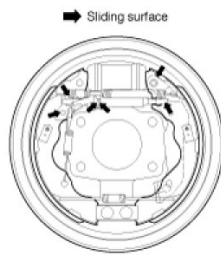
1. Apply sealant (C) between the wheel cylinder (A) and backing plate (B), and install the wheel cylinder.



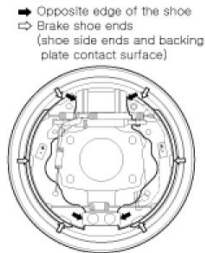
2. Connect the brake tubes (D) to the wheel cylinder.
3. Connect the parking brake cable to the parking brake lever.
4. Clean the threaded portions of adjuster sleeve (A) and push rod female (B). Coat the threads of the adjuster assembly with grease. To shorten the devices, turn the adjuster bolt (C).



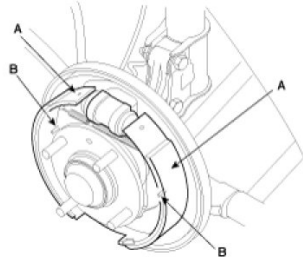
5. Hook the shoe adjuster lever, then install it to the brake shoe.
6. Install the adjuster assembly and upper return spring (D) as right direction. Be careful not to damage the wheel cylinder dust covers.
7. Install the lower return spring (E).
8. Apply brake cylinder grease or equivalent rubber grease to the sliding surfaces shown. Don't get grease on the brake linings.



9. Apply brake cylinder grease or equivalent rubber grease to the brake shoe ends and opposite edges of the shoes shown. Don't get grease on the brake linings.



10. Install the brake shoes (A) onto the backing plate. Be careful not to damage the wheel cylinder dust covers.
11. Install the shoe hole down pins (B) and the shoe hole down springs.



12. Install the brake drum.
13. If the wheel cylinder has been removed, bleed the brake system.
14. Depress the brake pedal several times to set the self-adjusting brake.
15. Adjust the parking brake.